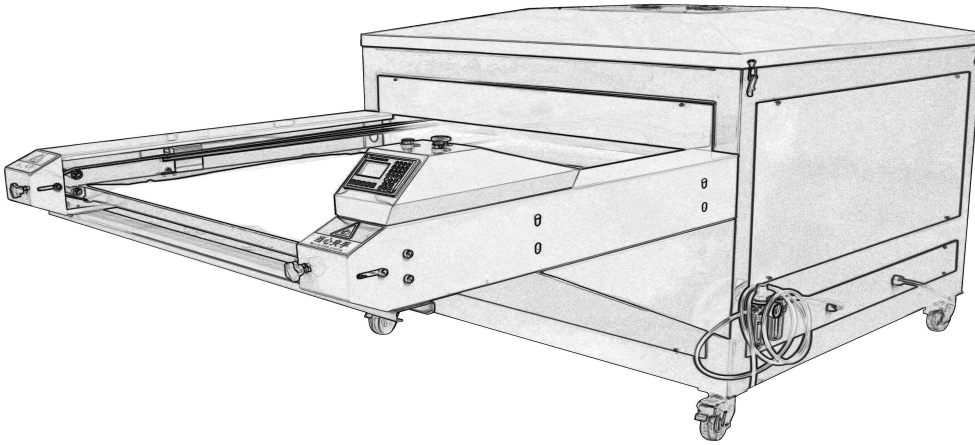


Automatic Double Station Heat Press Transfer Machine



Technical Data



FEATURES

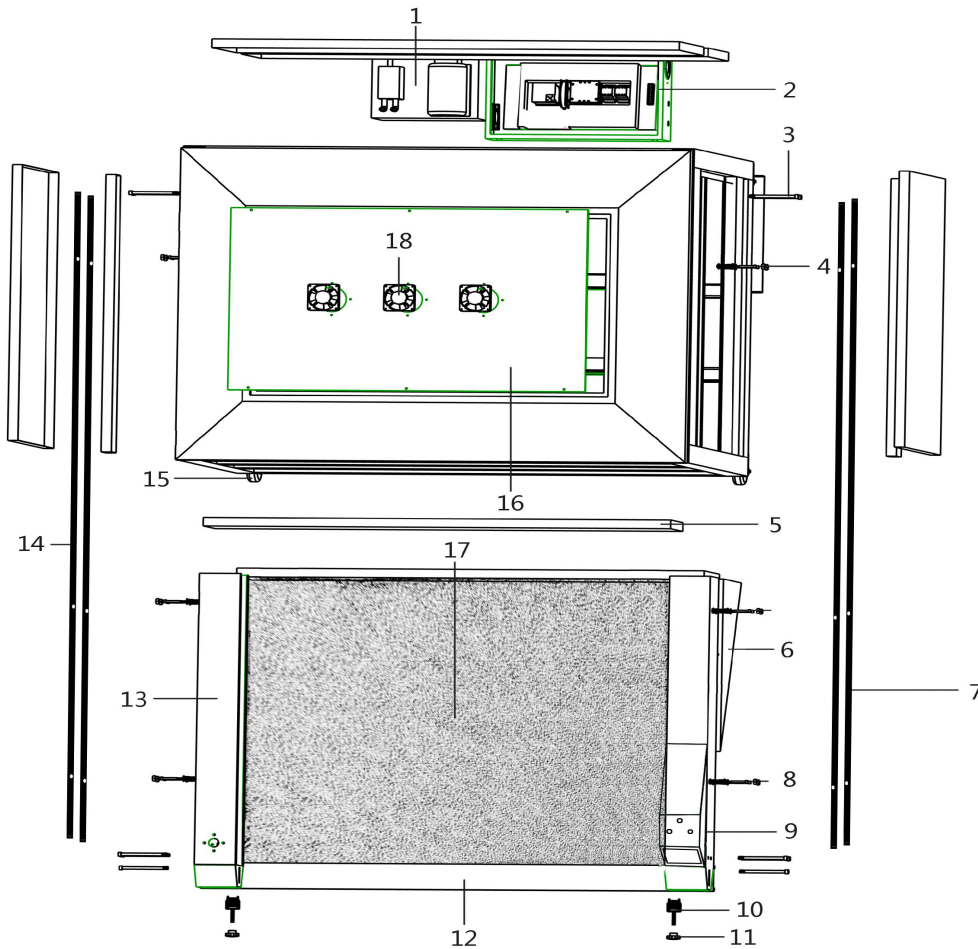
1. Automatic shuttle, only need one person to operate the machine.
Two working tables are designed at one side of the machine: one tables rolls out after finish printing, while another one will roll into the machine simultaneously. Two working stations take turns to do the printing
2. Dual stations/Twin stations are designed at one side of the machine, occupy less floor space.
3. pneumatic version: need to work with an extra air compressor.
hydraulic version: can work alone, no need air compressor.
4. Both upper and lower platen are made by aluminum alloy. scientific reasonable designed heat platen, heat distribution evenly,no cold sport on printing.
5. two loading tray/moving table use mirror aluminum sheet (instead of iron sheet and fabric net).
6. use Central Processing Unit/CPU , microcomputer control system, less problem on electronic components.
7. heavy pressure for printing, pressure can be up to 140 KG/ cm².
8. Strong machine body frame, machine can be used for long time

SPECIFICATION:

Voltage	110V/220V/380V
Power	9KW-15KW
Working table size (CM)	80*100cm,100*120cm,110*160cm,110*170cm(special size upon order)
Time range	adjustable
Temperature range	0-399 centigrade
Working distance of air cylinder	18CM
material of heat plate	Billet Aluminum
Aluminum tectonic plate	high quality heat pipe casting
Aluminum plate thickness	9.5CM
Maximum Pressure	140 KG/ cm ²

Packing size (CM)	173*120*120cm,160*140*120cm,207*151*173cm
Packing	Export wooden case packing
G.W.	850KG, 1100KG, 1350KG, 1420KG

Introduction of Machine Parts:



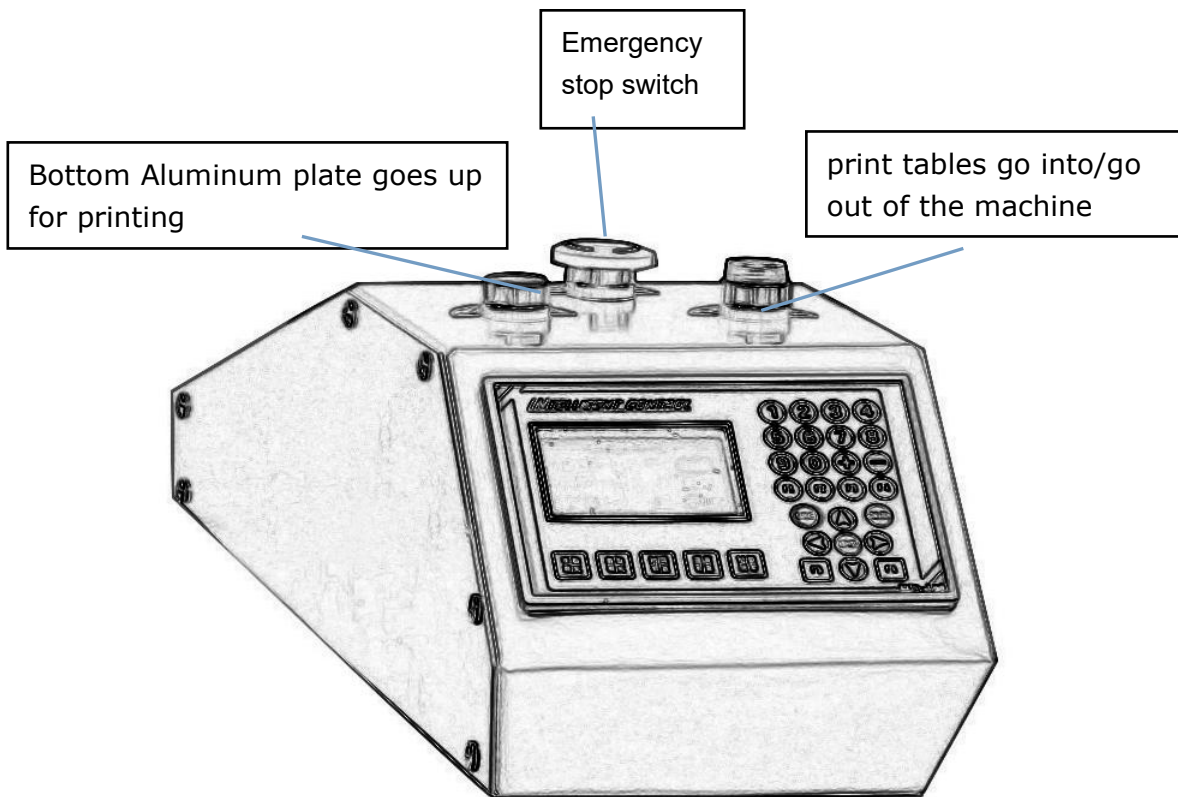
1. Hydraulic pump 2. Electrical box 3. Positioning Screw
2. 4. Axis Screw 5. Front cover 6. Fixed Triangle
- 7.External Axis 8.Pressure spring 9.Control Panel
10. Fixing/Locking belt 11. Fixing/Locking handle 12. Protecting cover
13. External cover 14. Connecting Screw thread 15. Fixing Foot Wheel 16. Small top
- Cover 17. Movable Print tables 18. Fan

Installation steps

- 1: First, please install the front two fixed triangle plates
- 2: Remove the four screws in the front of fixed mobile net frame to remove the outer six angle screw . The four screws won't be used in the machine anymore.
- 3: When removing the screw, please use the movable wrench or other tools to support the net frame, or it will drop.
- 4: Put the matching optical axis into the linear bearing of the up and down net frame.The holes should be aligned on both sides of the machine frame.
- 5: Use the matching screw and spring to fix the optical axis on the special holes on both sides of the machine frame(not the previous holes of outer six angle screw). Installation step: Put the screw with 8*25 gasket and spring into the hollow screw to lock.
- 6: When installing the outside working table of the machine, please pay attention to the distinguish left and right side. The side with hole is the right side. And the two sides should be aligned on the outer side of machine frame.
- 7: Make the screw between working table and machine frame tight. Align the hole of the working table and use the the hollow screw to fix the four optical axis.
- 8: Make the screw of the triangle plate tight
- 9: Insure the outside working table is parallel, then install the cover of the machine.
- 10: Remove the outer six angle screw of the net frame, the screw won't be used in the machine anymore.
- 11: Pull the up net frame and put the belt in the belt pulley.
- 12: Install the belt pulley of left and right protective shell and put the screw into it, then make the screw proper tight.
- 13: According to the slightly curved of the drive shaft, adjust the front right and left nuts to make belt be pulled in. Too tight will influence the lifetime.
- 14: Through the reserve hole to main electricity box,connect the wire according to the number,or connect according to the controller
- 15: Do not change the wire if do not know the element of electric circuit, prevent burning or electric shock
- 16: Finally check the screws of the position switch, do not loose .do not change the place and angle of switch.

For more details, please refer to the demonstration CD that packed together with the machine!!

Control Button:




Precautions:

1. Please do not press any button or switch of the machine when the machine is functioning properly.
2. Please do not go too close to the machine when it is working, in case of causing any bruise or injury
3. Please do not change or modify electric circuit of the machine if you do not completely understand this machine.

Operation Panel

1: Turn on the power, input the password, initial password 000000

2: The setting item is shining ,press     move it

3: Shortcut key on the board, press the item for setting,like “ time setting”

4: The number is shining when setting, “+” or “—”

5: Independent switch for heating,press it to start heating.

6: °C/°F adjustable

7: Adjustable temperature range 0-250°C ,it may burned over 250°C

8: If set up confusedly, you can load factory default

9: Appointment time to power on function, you can timing it in 24 hours, prepare for next operation.

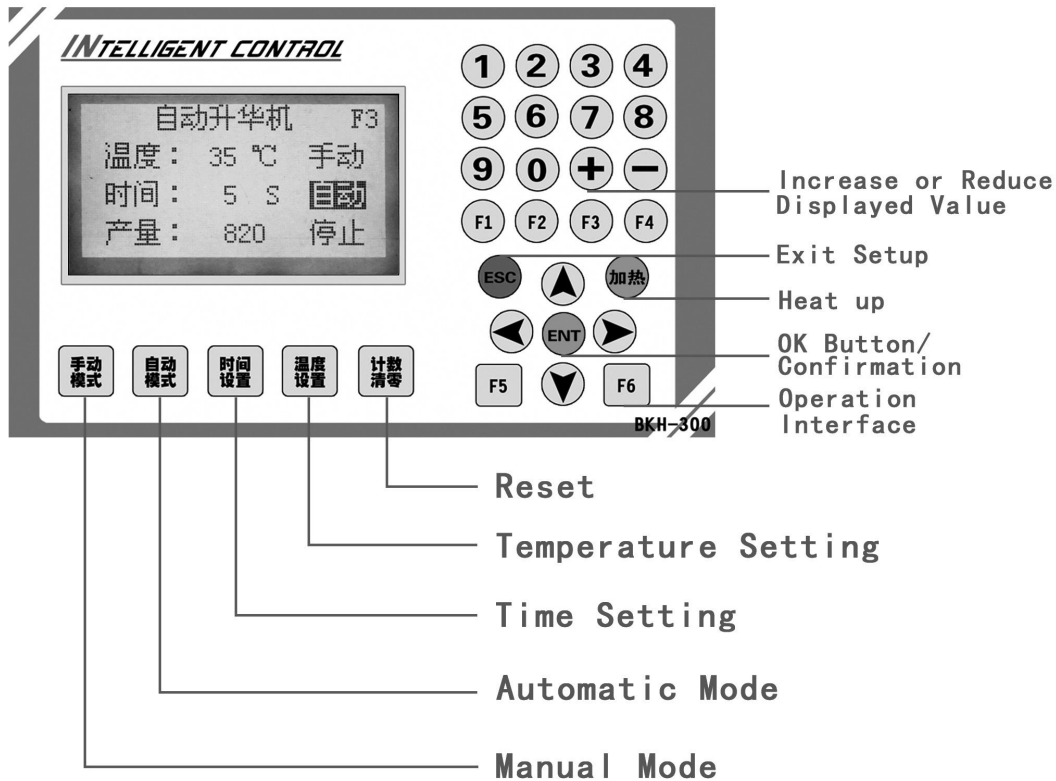
10 : Semi-auto/full automatic for option, set “ time of putting material “and “time of printing” when full automatic work

11 : In full automatic , the two trays infinite loop movement if you started it, press emergency stop to stop.press emergency stop again to restore.

12 : F6, the advanced system parameter settings,independent maintenance needed. The factory offset compensation, it needed when exceptional emergency.

13 : Since thermal lag of the soil heat transfer, please make the printing after the temperature stable 10 minutes.

Operation Instructions



Page Setup Feature

F1-Welcome Screen

F2-Safety Instruction

F3-Settings Screen for Automatic Mode, Manual Mode, Stop, Time, Temperature, Volume of Production etc.

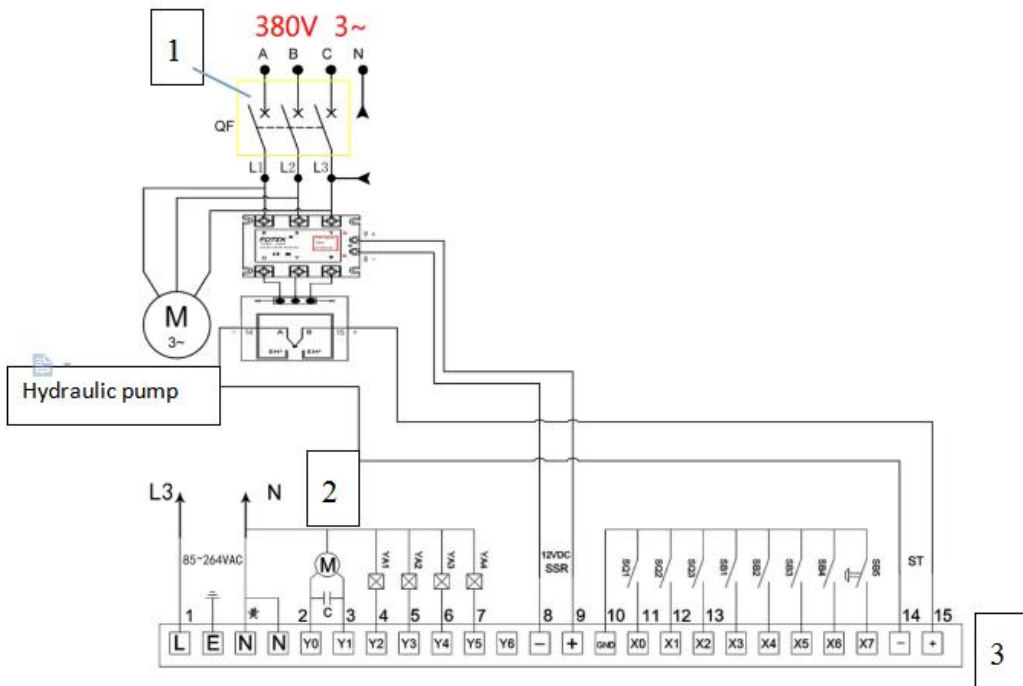
F4-Heating Switch, Celsius and Fahrenheit Conversion, Temperature Upper Limit, Auto Power on Reservation, Factory Reset

F5-Automatic Operation Switch, Time for Placing Product on Print Bed, Print Time

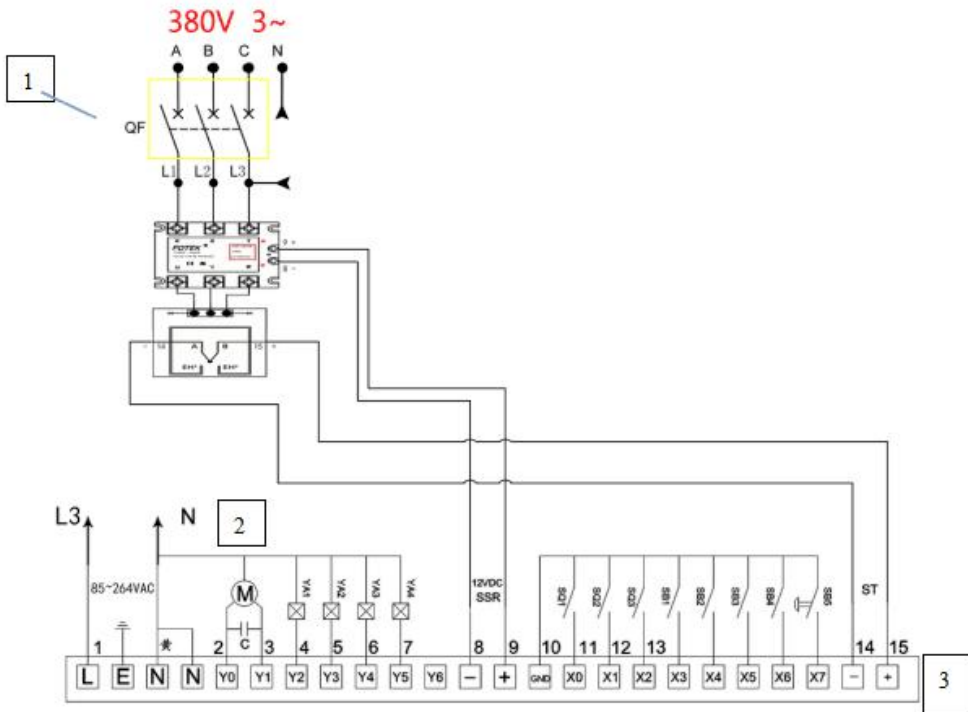
F6-There are passwords to protect system parameter. If you need to change system parameter, please contact its manufacturer. Improper modification may lead to malfunction of the machine. In this case, please restore factory settings. The original password for starting up is 000000

If you need to change password, please press "Change Password" at the the bottom right of the interface when you start up.

Electric circuit diagram (hydraulic):

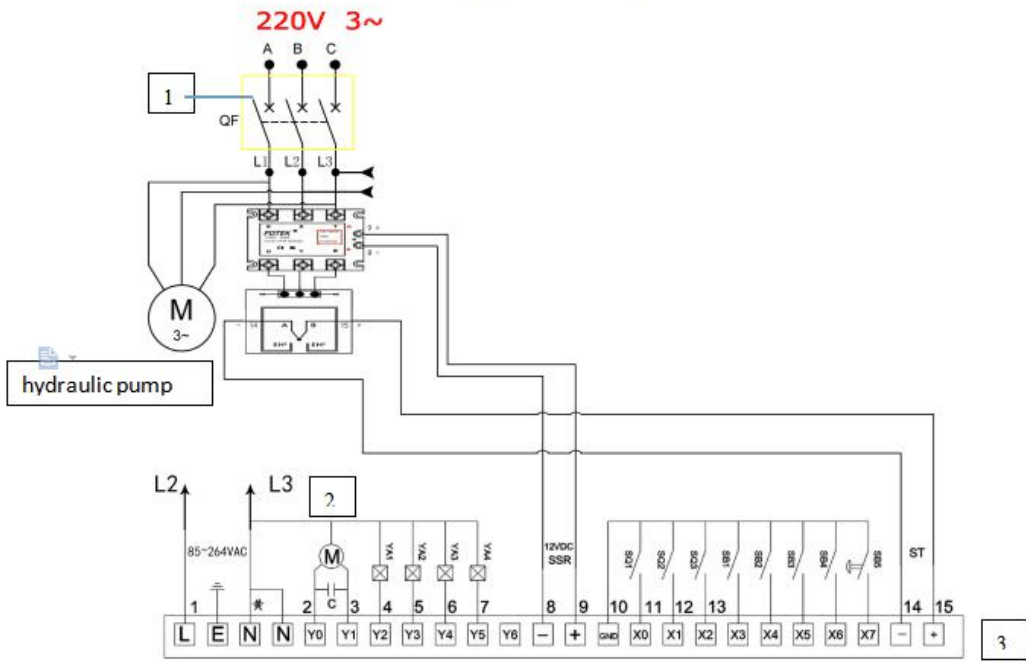


Electric circuit diagram(pneumatic):

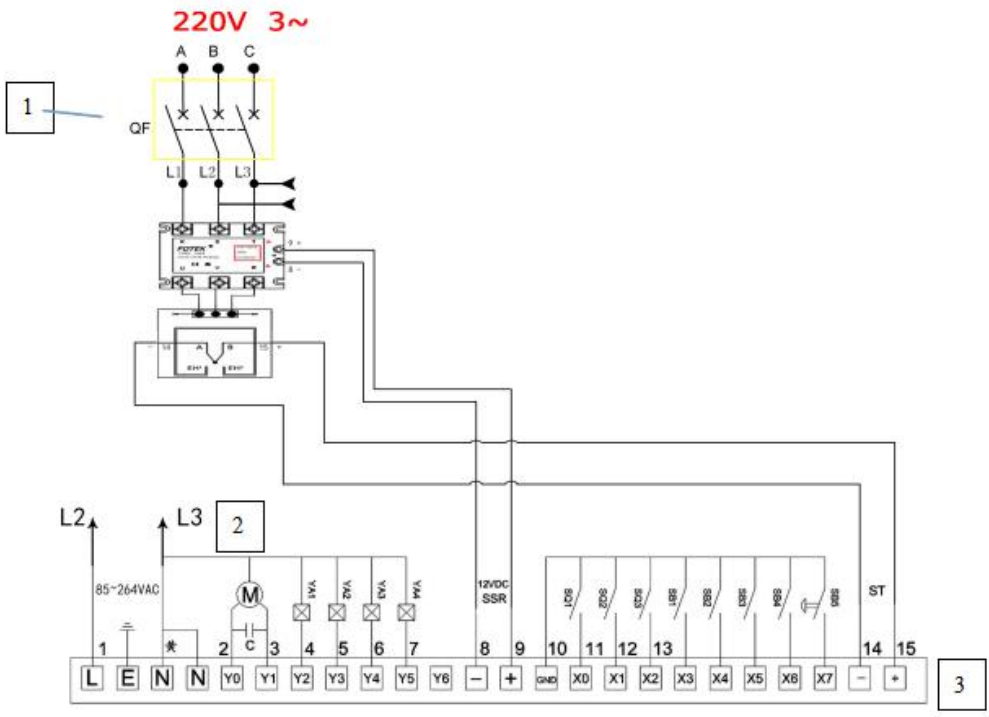


- 1. Air switch
- 2. drive motor for print tables
- 3. control panel

Electric circuit diagram (hydraulic) :

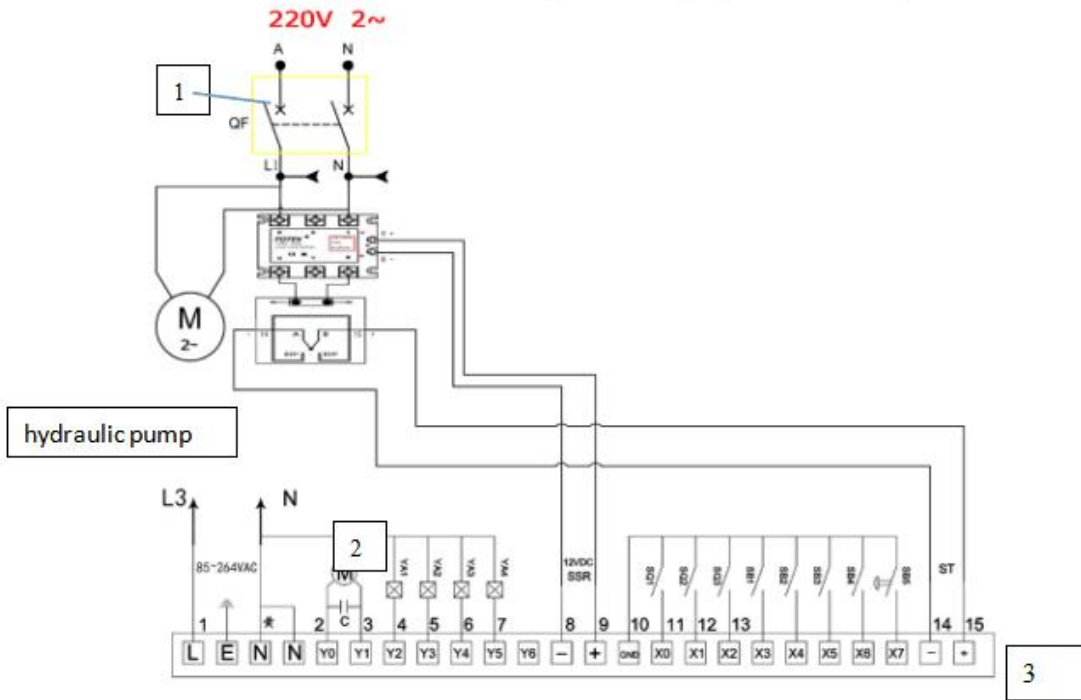


Electric circuit diagram (pneumatic):

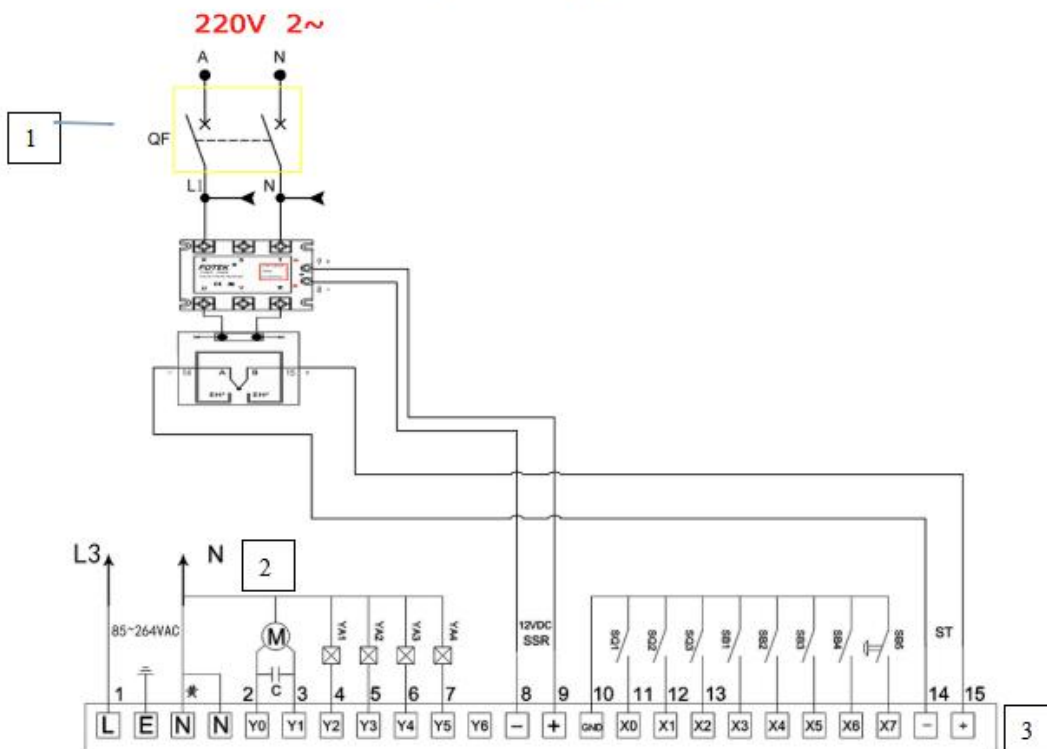


- 1. Air switch
- 2. drive motor for print tables
- 3. control panel

Electric circuit diagram (hydraulic):



Electric circuit diagram (pneumatic) :



1. Air switch 2. drive motor for print tables 3. control panel

How to adjust pressure



1. Press the lock ring, insert connector
2. Adjust the pressure by turning knob to left side or right side. If you turn the knob clockwise, pressure will be increase; counterclockwise, the pressure will decrease.
3. Water in regulator will flow out when the pressure is zero
4. In order to extend the service life of the machine part, please make sure there are always steam-driven oil/ lubricating oil inside oil cup.

About hydraulic pump and hydraulic oil:

There is a oil tank in hydraulic heat press machine. if the hydraulic oil is less than a half of its tank, please refill some to it
About this hydraulic oil, its model is HM-68#. Please see whether you can find this same oil in your local market.
If you can not find the same oil in the market, please ask oil seller to give you the most similar one.
Please fill the tank with two thirds of its volume. You can use a dry stick, put it into the tank, and then take it out. judging from whether this stick is dry or wet, you can know how much oil is left in the tank.

Machine details:

1. intelligent control panel:

Use Central Processing Unit, microcomputer control system, with less electronic components, more simple circuit, can positively minimize the breakdown rate of electronic components.



2. both upper and lower platen are made by aluminum alloy.

Scientific design of heater inside upper heat platen, uniform heating, no shrink of heat platen, no cold spots.



3. Hydraulic pump inside hydraulic version heat press machine

With hydraulic pump inside, no need to work with any extra air compressor



4. Air filter in pneumatic version heat press machine

Please turn the black rotating knob clockwise/clockwise to increase or decrease the pressure.



5. Mirror aluminum sheet as loading trays/moving tables

Mirror aluminum sheet smooth surface and great flexibility, good for even distribution of pressure.

